

SPECIFICATION SHEET

PRODUCT # SL319-AB

Housing: Crafted from cast brass and PBT injection molded housing.

Lens: Lens flush with the fixture so water cannot puddle. Frosted lens reduces glare and gives softer illumination.

Socket: High Temperature ceramic socket with nickel contacts,

Lamp: MR-16 Lamp type, Max wattage 25W. Or G-4 Lamp type, Max wattage 25W.

Gasket: A thick rubber gasket between cover and poly box for a water tight seal.

Wiring: 3' #18/2 Direct bury landscape lighting wire with UL listed, Pre-stripped hub-ready leads for quick installation.

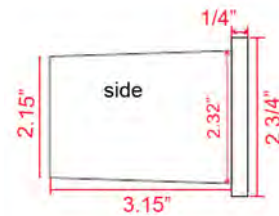
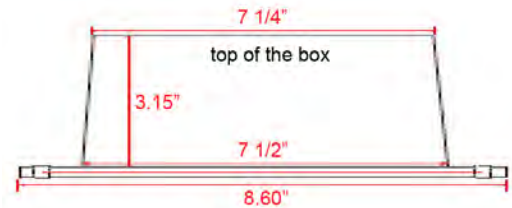
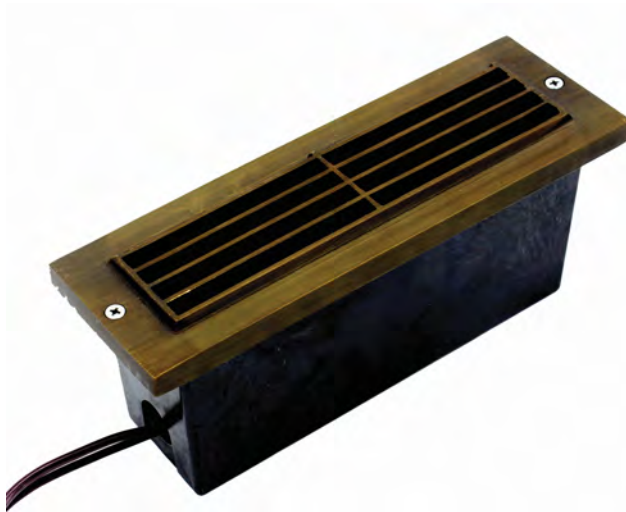
Mounting: Flush Mount PBT Injection molded Housing

Electrical Notes: A remote 12V or 24V transformer required, may be ordered to Elram, Inc. separately. Voltage range for 12V halogen lamps are 11V-12.5V. Voltage range for LED lamps are 9V-17V. Wire Connectors required.

Hardware: Hexagonal crew fix to part

Warranty: Limited lifetime Warranty

SL319			
SERIES	FINISH	VOLTAGE	LAMP
SL319 - Brass Large Step Light W/ Frosted Lens	AB Antique Brass	12V DC	L - LED LAMP



ACCESSORIES

Grilled Cover w/
Frosted Lens

